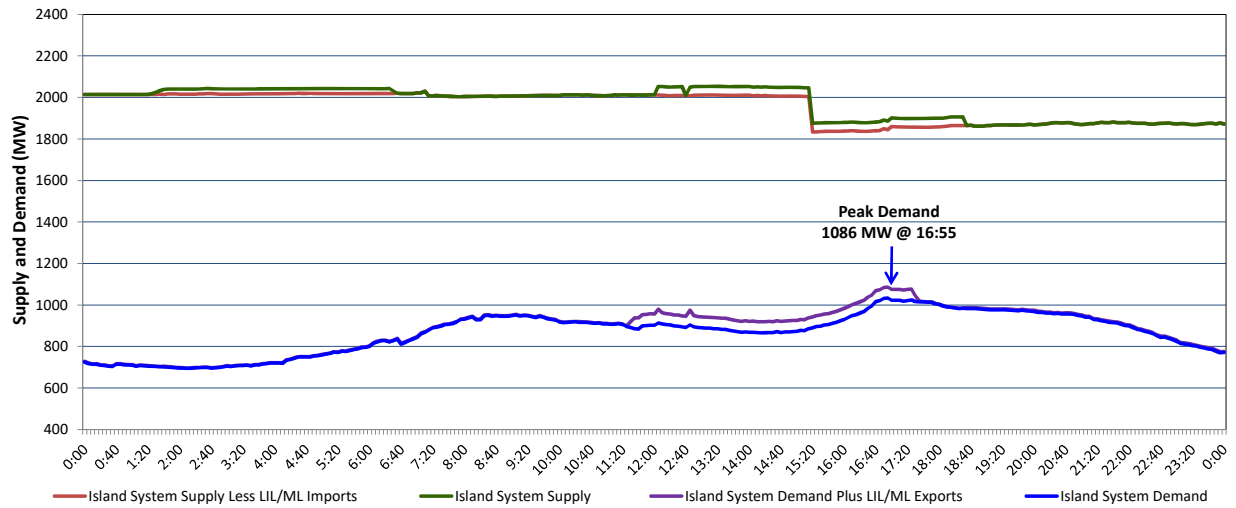


**Newfoundland Labrador Hydro (NLH)
Supply and Demand Status Report Filed Tuesday, December 08, 2020**

**Section 1
Island Interconnected System Supply, Demand & Exports
Actual 24 Hour System Performance For Monday, December 07, 2020**



Supply Notes For December 07, 2020

^{1,2}

A At 1520 hours, December 7, 2020, Holyrood Unit 2 available but not operating (170 MW).

**Section 2
Island Interconnected Supply and Demand**

Tue, Dec 08, 2020	Island System Outlook ³	Seven-Day Forecast	Temperature (°C)		Island System Daily Peak Demand (MW)	
			Morning	Evening	Forecast	Adjusted ⁷
Available Island System Supply: ⁵	1,785 MW	Tuesday, December 8, 2020	3	3	1,140	1,039
NLH Island Generation: ⁴	1,455 MW	Wednesday, December 9, 2020	6	2	1,295	1,192
NLH Island Power Purchases: ⁶	90 MW	Thursday, December 10, 2020	1	1	1,230	1,128
Other Island Generation:	240 MW	Friday, December 11, 2020	0	1	1,295	1,192
ML/LIL Imports:	- MW	Saturday, December 12, 2020	0	-2	1,270	1,167
Current St. John's Temperature & Windchill:	3	Sunday, December 13, 2020	-3	1	1,315	1,212
7-Day Island Peak Demand Forecast:	1,315 MW	Monday, December 14, 2020	11	11	1,235	1,133

Supply Notes For December 08, 2020

³

B At 0651 hours, December 8, 2020, CAT Arm Unit 1 unavailable due to planned outage (67 MW).

- Notes:
1. Generation outages for running and corrective maintenance are included. These are not unusual for power system operations. They generally do not impact customer supply. The power system operators schedule outages to system equipment whenever possible to coincide with periods when customer demands are low and sufficient supply reserves are available. However, from time to time equipment outages are necessary and reserves may be impacted.
 2. Due to the Island system having no synchronous connections to the larger North American grid, when there is a sudden loss of large generating units there may be a requirement for some customer's load to be interrupted for short periods to bring generation output equal to customer demand. This automatic action of power system protection, referred to as under frequency load shedding (UFLS), is necessary to ensure the integrity and reliability of system equipment. Under frequency events have typically occurred 5 to 8 times per year on the Island Interconnected System and the resultant customer load interruptions are generally less than 30 minutes. With the activation of the Maritime Link frequency controller during the winter of 2018, UFLS events have occurred less frequently.
 3. As of 0800 Hours.
 4. Gross output including station service at Holyrood (24.5 MW) and improved NLH hydraulic output due to water levels (35 MW).
 5. Gross output from all Island sources (including Note 4).
 6. NLH Island Power Purchases include: CBPP Co-Gen, Nalcor Exploits, Rattle Brook, Star Lake, Wind Generation and capacity assistance (when applicable).
 7. Adjusted for curtailable load, market activities and the impact of voltage reduction when applicable.

**Section 3
Island Peak Demand Information
Previous Day Actual Peak and Current Day Forecast Peak**

Mon, Dec 07, 2020	Actual Island Peak Demand ⁸	16:55	1,086 MW
Tue, Dec 08, 2020	Forecast Island Peak Demand		1,140 MW

Notes: 8. Island Demand / LIL / ML Exports (where applicable) is supplied by NLH generation and purchases, plus generation owned and operated by Newfoundland Power and Corner Brook Pulp & Paper (Deer Lake Power, DLP).